



**EUROPEAN ISLANDS ENERGY &  
ENVIRONMENT NETWORK**



# ISLENET



## KEY ISSUES

The European Commission has recognised island territories as regions whose permanent structural handicaps result in shortfalls in development. The vast majority of them have to contend with a double or even a triple handicap, their island status, their mountainous terrain and their place in an archipelago.

Focus on high quality and environmentally friendly energy supply is of utmost strategic importance. Links with the energy networks of the mainland are a priority as they greatly facilitate life on these islands. Furthermore, renewables energies constitute a new sector with high employment creation potential, which should be promoted in order to meet the challenges of regional development and economic and social cohesion. Local authorities have a very important role to play in developing energy and environmental strategies that would favour demand and promote local supply and the pursuit of sustainable development.

## WHAT IS ISLENET?

ISLENET is a network of European Island Authorities which promotes sustainable and efficient energy systems and environmental management. Since 1993, it has been actively promoting the adoption of local energy saving strategies and renewable energy projects. These have an important effect on local economic development and involve a well-balanced approach to environmental management and sustainable development.

ISLENET is an initiative of the Islands Commission of the CPMR (Conference of Peripheral and Maritime Regions) and is supported by the EU Institutions and Western Isles. The host region of Western Islands Council assures both the administrative and financial management.

ISLENET has a close working relationship with Directorate General for Energy and Transport (DG TREN) of the European Commission and with FEDARENE and ENERGIE CITES, two other networks promoting energy and environmental management at local level. It is worth noting that membership is not restricted to European Union islands only. Island regions from non-EU members have taken part in our activities.

# ISLENET

## WHAT CAN ISLENET DO FOR YOU?

**ISLENET promotes the development of sustainable local energy policies** thereby strengthening the role of local governments and fostering interregional cooperation and partnerships between islands.

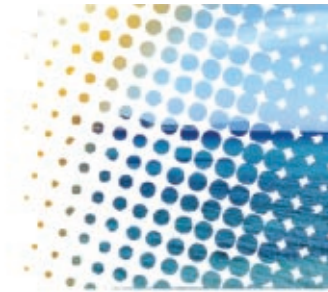
**ISLENET helps members set up energy and environmental projects** thanks to its knowledge of national and EU programmes and through an extensive network and pooling of knowledge developed by island authorities. The creation, for example, of local and regional energy agencies has had an important effect on the development of energy management projects in islands. More than 20 agencies already exist, 15 of which were created within the framework of EC programmes (SAVE II) and with the help of ISLENET.

**ISLENET diffuses information on a wide range of insular issues concerning energy and the environment** by regular e-mail bulletins, a newsletter and via ISLENET meetings and events. Topics include legislation (energy, environment, regional policy, transport, SMEs), calls for proposals, publications, conferences, research and development projects and best practice technology. Information is circulated not only to inform but also to avoid duplication of effort.

**ISLENET presents the islands' point of view.** It acts, where appropriate, as a channel of communication between Island Authorities and the Institutions and Member States of the European Union on matters concerning EU energy and environmental policy. Position papers and reports are proposed to European Institutions in response to EU legislation. Given the problems resulting from the peripheral nature of islands and their insularity, coordination of activities is of paramount importance. Coordinated actions improve awareness of island issues within the European Institutions and help strengthen their voice in the European Union.

## CONTACT

ISLENET wishes to work with all organisations having an interest in developing energy and environmental management in islands. Its intention is to promote an integrated approach to island sustainable development. If this is of concern to you, do not hesitate to contact ISLENET: Email: [islenet@skynet.be](mailto:islenet@skynet.be) - Website: <http://www.europeanislands.net>



**Our addresses:**

**Main office**

ISLENET

Western Isles Council

Sandwick Road - Stornoway

Isle of Lewis HS1 2BW, UK

Tel: +44 1851 709270 - Fax: +44 1851 709205

**Brussels office**

ISLENET

6, Avenue des Renoncules

1300 Limal - Belgium

Tel: +32 10 41 99 76 - Fax: +32 10 41 99 76

Email: [islenet@skynet.be](mailto:islenet@skynet.be)

Website: <http://www.europeanislands.net>

